



SINCE 2003

MMP

MANUTENZIONI | MONTAGGI | PROGRAMMAZIONI

YEARS
20
ANNIVERSARY
CELEBRATION



**PREFABRICATION, MAINTENANCE & ERECTION
OF INDUSTRIAL PLANTS**

MMP S.R.L.



M.M.P. S.R.L. HAS BEEN ESTABLISHED IN JULY 2003. WE HAVE A LONG AND RESPECTABLE HISTORY IN THE FIELD OF INDUSTRIAL CONSTRUCTIONS, THANKS TO THE EXPERIENCE GAINED BY OUR PEOPLE, UNDER THE LEADERSHIP OF THE FOUNDER, MR. SALVATORE NICOLOSI. OUR TEAM IS MADE UP OF HIGH SKILLED AND EXPERIENCED PEOPLE IN THE FIELDS OF MAINTENANCE AND MECHANICAL INSTALLATION ACCRUED IN THE IMPORTANT PROJECTS CARRIED OUT IN ITALY AND ABROAD.

OUR CONTACTS



REGISTERED OFFICE: VIA CIANE, 21 - 96100 SIRACUSA

OPERATIONAL HQ: CONTRADA BALORDA 22, 24 - 96010 PRIOLO G. (SR)

SHARE CAPITAL € 500.000,00



TEL: +39 0931 735749

FAX: +39 0931 735750



WWW.MMPGROUP.IT



INFO@MMPGROUP.IT



OUR SPECIALIZATIONS

HOT WORKS

(PREFABRICATION AND ERECTION)

PIPING

PIPING SUPPORTS

STEEL STRUCTURE

RETUBING AND REPARATION
OF TUBE BUNDLES

COLD WORKS

(MANTEINANCE AND SCAFFOLDING)

HEAT EXCHANGERS

COLUMNS

REACTORS

VESSELS

AIR FINS & SCAFFOLDING

SPECIALIST MAINTENANCE

BOLT TENSIONING - BOLT TORQUING - ON SITE MACHINING

THE SYNERGY BETWEEN OUR DEPARTMENTS MAKE US CAPABLE TO PERFORM ALL THE NECESSARY MECHANICAL TASKS FOR THE MAINTENANCE OF THE PLANT, FROM THE BLINDING TO TESTING AND FINAL DELIVERY. FOR THE CLIENT, THE OUTCOME IS A STREAMLINED AND ENCOMPASSING WORKING PROCESS, MANAGED WITH A SINGLE AGREEMENT AND ONE CONTRACTUAL COUNTERPARTY



MANUFACTURING PROCESS CERTIFICATES



UNI EN ISO 9001:2015 - certificate n. 239 - IIS Cert
Field of Application: Installation and Maintenance
Of Industrial Plants; Fabrication of Piping and
Steel Structure; Machining and Joints Tightening.

ISO 3834 - cert. n. 2/IT/156 IIW & EWF – Field of
Application: Piping and Steel Structure.
Certification Bodies: International Institute of
Welding and European Welding Federation.
WP 111 / 138 / 148 - PMG 1 / 5 / 8

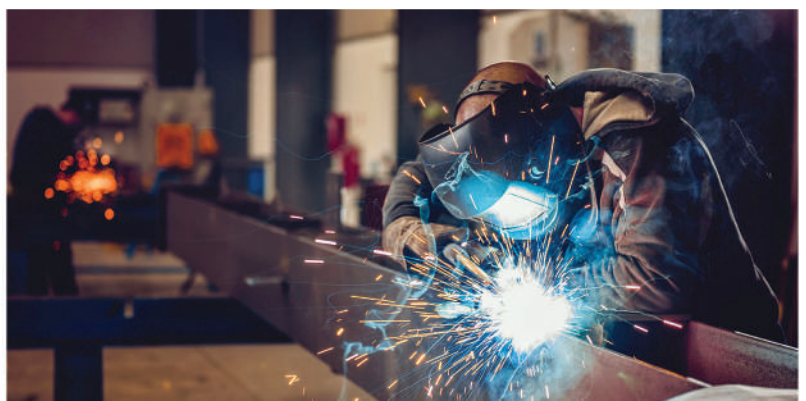
UNI-EN-ISO 45001:2018 certificate N° 30 S -
management system for health and safety in the
workplace.

UNI-EN 1090-1:2009 + A1:2011 ANNEX A
prefabrication and assembly of structural
components up to class EXC 3

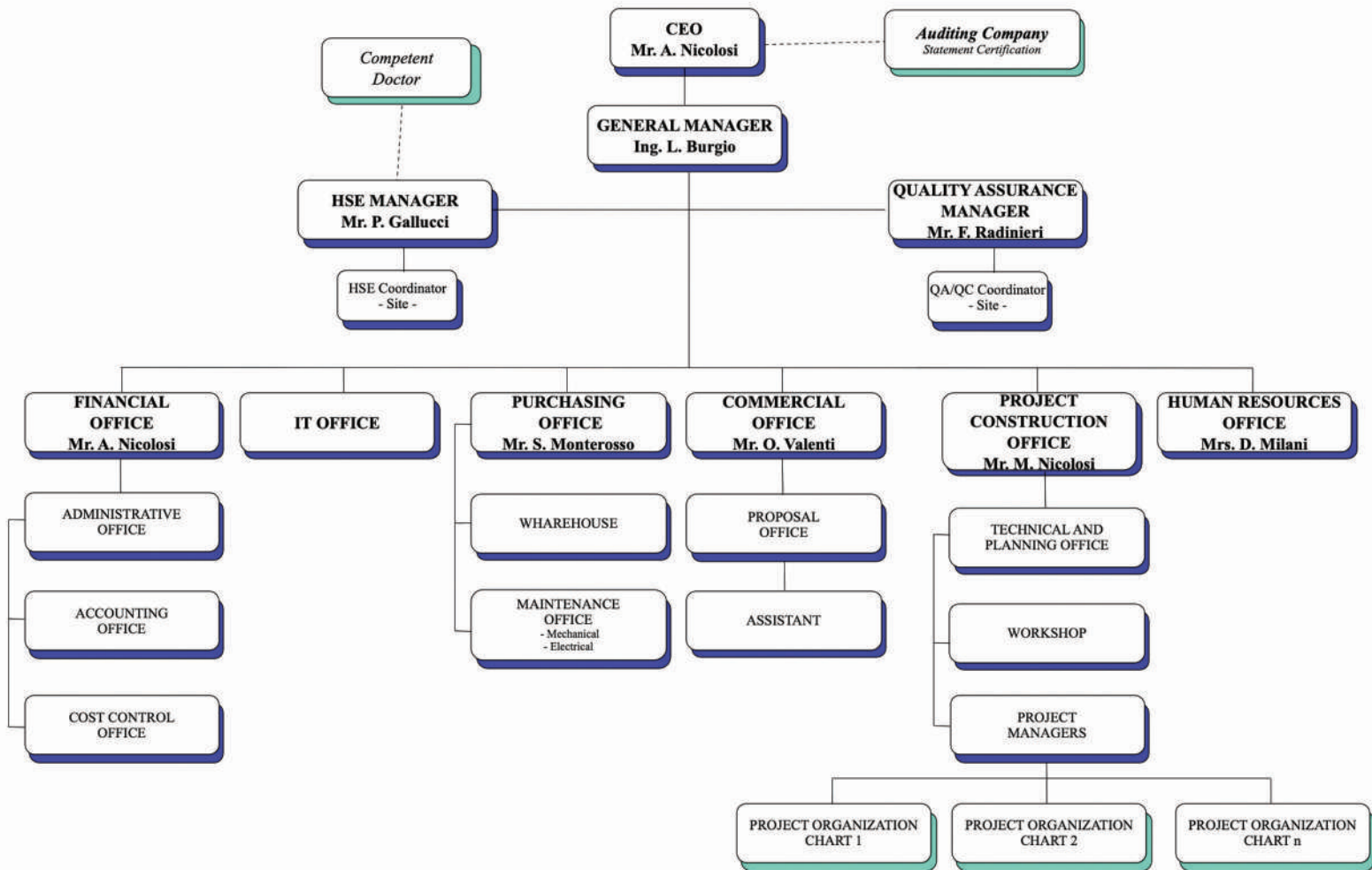
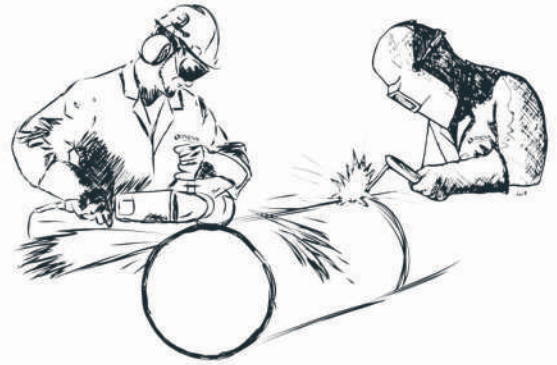
The safety of the employees and the respect of
the environment are key points of M.M.P. S.r.l.
business policy. In this view, beyond the ones
requested by Italian law, we constantly strive to
obtain additional certifications, and for this reason
we have recently implemented and obtained the
VCA certification.

A team of experts in the
mechanical sector
which uses in each step
certified quality
process.

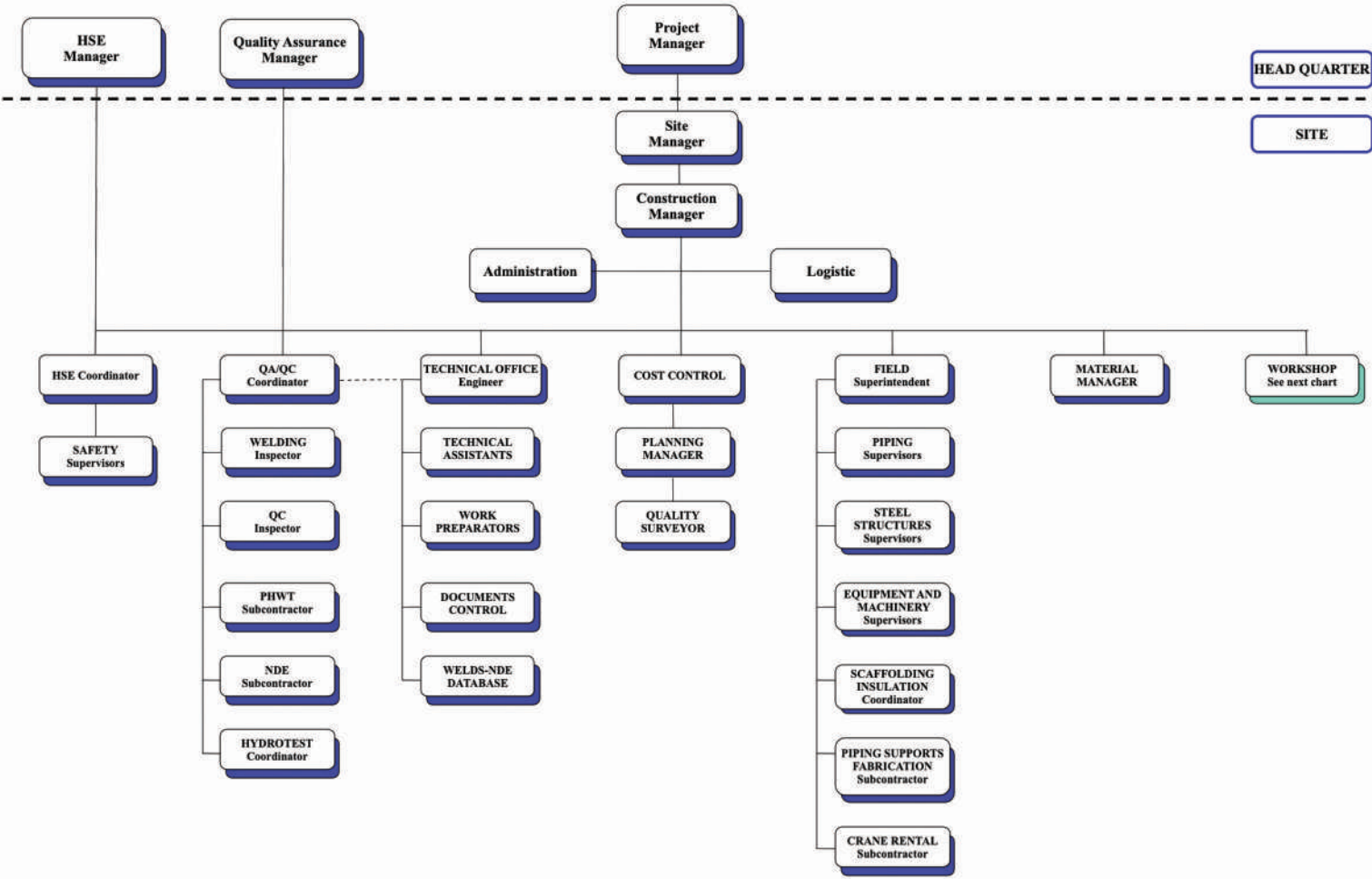
The synergy of professionals
with decades of experience in
their respective fields
(commercial, organizational and
technical departments) is for our
clients an absolute guarantee
for a thorough execution of any
work. The certification of our
processes further strengthens
the quality of the final result.



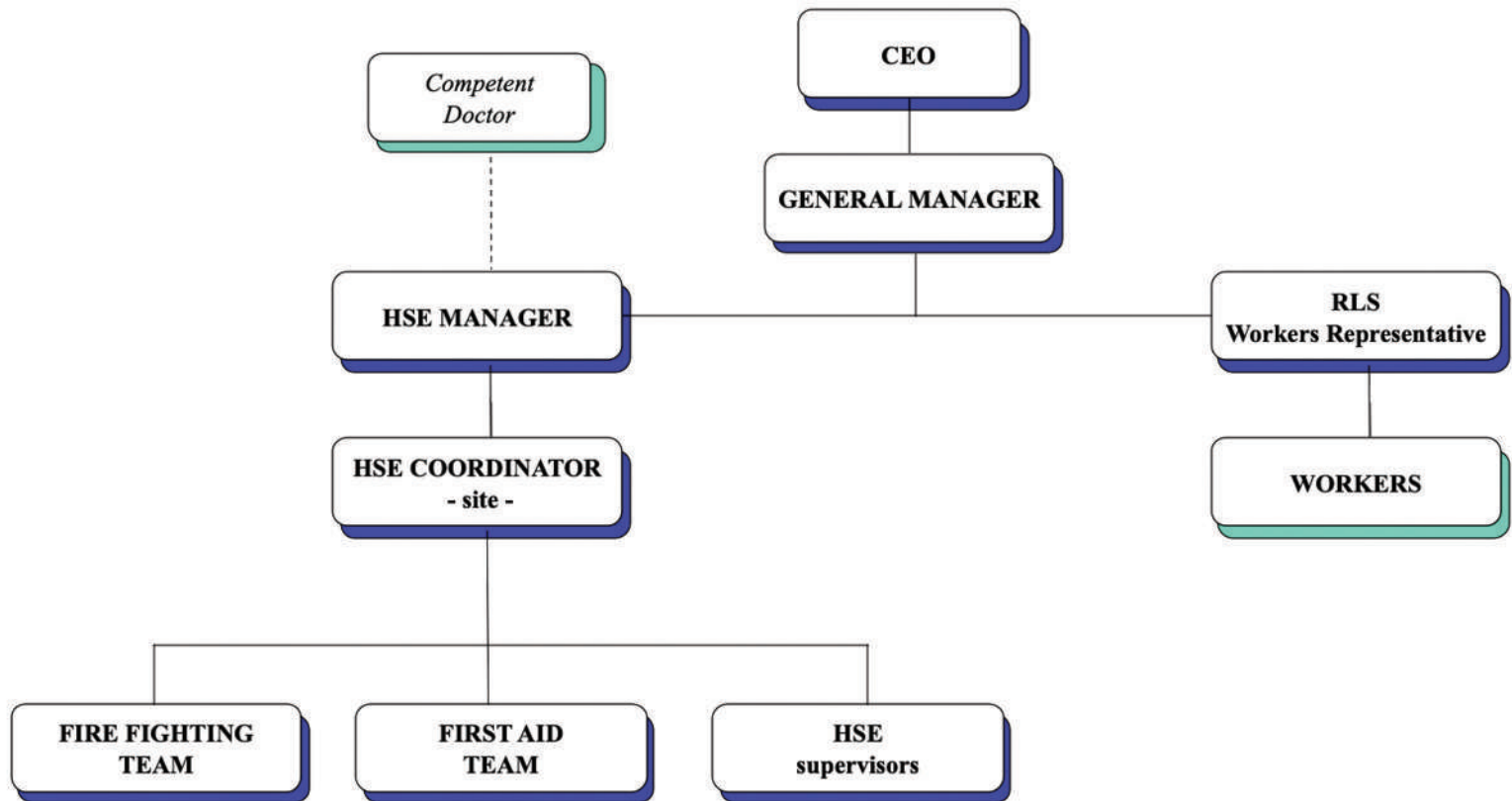
GENERAL ORGANIZATION CHART



PROJECT ORGANIZATION CHART



SAFETY AND ENVIRONMENT ORGANIZATION CHART



SAFETY INDEX IN THE LAST THREE YEARS

	2021	2022	2023
WORKED HOURS.....	203.773	112.800	158.468
ACCIDENTS NUMBER.....	0	0	1
FREQUENCY INDEX.....	0	0	6,30
SEVERITY INDEX.....	0	0	0,01



10

TECHNICAL EMPLOYEES

05

QUALITY CONTROL

04

CONSTRUCTION MANAGERS

32

PIPE FITTERS

42

WELDERS

18

STEEL CARPENTERS

50

FITTERS

50

HELPERS

06

ELECTRICIANS

16

CRANE OPERATORS/DRIVERS



The number of units above is just an sample referred to an "ordinary" year. As a particular project may require, M.M.P. S.r.l. is capable to deploy up to 600 units

OFFICE AND WORKSHOP

CONTRADA BALORDA - PRIOLO GARGALLO SIRACUSA - ITALY

● OFFICES 650 SQM



● **WORKSHOP 1**
COVERED AREA 1.400 SQM
OUTDOOR AREA 11.000 SQM (STOCKING + WAREHOUSE)
1 BRIDGECRANES 4 TONS

● **WORKSHOP 2**
COVERED AREA 1.750 SQM
OUTDOOR AREA 6.750 SQM (STOCKING + WAREHOUSE)
2 BRIDGECRANES 10 TONS

We also have
available Construction
Temporary Structure

- 20 office container
2,5x6 m
- 20 storage container
2,5x6 m
- 10 storage container
2,5x12 m

SITE EQUIPMENT CONSTRUCTION



- 01** CRANE 90 TONS LIEBHERR
- 01** CRANE 50 TONS LIEBHERR
- 05** CRANE 45 TONS TEREX (RT1045L)
- 01** CRANE 30 TONS TEREX (A 350)
- 01** CRANE 30 TONS TEREX (A 300)
- 03** TELESCOPIC FORK LIFT MANITOU 25.50
- 01** 3 TONS MANITOU FRONT FORK LIFT.
- 02** 3.5 TONS MANITOU FRONT FORK LIFT.
- 02** MERLO ROTO 35.16 KS TELESCOPIC FORK LIFT
- 01** JLG 26M AERIAL PLATFORM
- 10** 7/9 SEATER MINIBUS
- 06** CRANE TRUCK
- 01** ARTICULATED TRUCK WITH CRANE
- 05** ARTICULATED TRUCK
- 04** FORKLIFTS
- 03** BUS 52 SEATS
- 08** 3-SEAT BOX VAN
- 10** 3-SEAT CRANE TRUCK
- 06** PICK UP
- 15** CARS

MAIN EQUIPMENT

- PCS. 160 - ELECTRODE AND TIG WELDING MACHINES
- PCS. 018 - CONTINUOUS WIRE WELDING MACHINES
- PCS. 090 - TOOLBOXES FOR PIPE FITTER / STEEL FITTER
- PCS. 090 - TOOLBOXES FOR ARGONIST WELDER
- PCS. 160 - TOOLBOXES FOR FITTER
- PCS. 030 - ENGINE DRIVEN WELDING MACHINES
- PCS. 006 - GENERATOR UP TO 275 KVA
- PCS. 012 - COMPRESSORS
- PCS. 002 - ELECTRIC COMPRESSORS OF 10,000 L/M
- PCS. 030 - ELECTRICAL CABINET
- PCS. 008 - FURNACE DRYING ELECTRODES
- PCS. 090 - PORTABLE ELECTRODE FURNACE
- PCS. 018 - PNEUMATIC HACK SAW FOR TUBE CUTTING
- PCS. 010 - PNEUMATIC HACK SAW FOR TIE ROD CUTTING
- PCS. 012 - 1/2 "PNEUMATIC SCREWDRIVERS
- PCS. 030 - 3/4 "PNEUMATIC SCREWDRIVERS
- PCS. 018 - 1 " PNEUMATIC SCREWDRIVERS
- PCS. 014 - 1 ½ " PNEUMATIC SCREWDRIVERS
- PCS. 060 - TIRFOR KG 750
- PCS. 040 - TIRFOR KG 1600
- PCS. 015 - TIRFOR KG 3200
- PCS. 003 - TIRFOR KG 3200 PNEUMATIC
- PCS. 009 - WELDING SMOKE EXTRACTORS
- PCS. 002 - WELDING SMOKE EXTRACTORS
- PCS. 060 - LEVER HOISTS
- PCS. 080 - CHAIN HOISTS
- PCS. 001 - COLUMN DRILL



MAIN EQUIPMENT

- PCS. 002 - RADIAL DRILLS
- PCS. 003 - SEMIAUTOMATIC TUBE EXPANDERS MAUS
- PCS. 001 - MOTORIZED OXIROTOR
- PCS. 003 - PNEUMATIC DEMOLITION HAMMERS
- PCS. 006 - BEVELING MACHINE FOR 1-4 INCH PIPES
- PCS. 006 - BEVELING MACHINE FOR 6-12 INCH PIPES
- PCS. 004 - BEVELING MACHINE FOR 8-18 INCH PIPES
- PCS. 001 - PLASMA PANTOGRAPH FOR SHEET METAL CUTTING 2500X3000 MM
- PCS. 002 - BANDSAW FOR PIPE CUTTING FROM 8 TO 24 INCHES
- PCS. 001 - OXYACETYLENE PLASMA FOR TUBE CUTTING FROM 0 TO 40 INCHES
- PCS. 001 - PEDRAZZOLI MITER SAW
- PCS. 001 - PUNCHING MACHINE FICEP
- PCS. 004 - MAGNETIC DRILLS
- PCS. 006 - HYDRAULIC BOLT TENSIONERS UP TO 4 INCH BOLT
- PCS. 013 - HYTORC HYDRAULIC POWER UNITS
- PCS. 004 - DRILLS WITH MAGNETIC BASE HYTORC
- PCS. 030 - HYDRAULIC WRENCH FOR TIGHTENING TIE RODS UP TO 4 INCHES
- PCS. 004 - BORING MACHINES UP TO DIAM. 2000 MM
- PCS. 002 - AIR CUTTERS FOR RETIFICATION OF SPACERS
- PCS. 001 - LATHE SAIMP
- PCS. 001 - LATHE SUPER VAMPIRE
- PCS. 001 - LATHE SF250
- PCS. 002 - AIR DRILL FOR AIR FINS UP TO 16 MM
- PCS. 012 - ELECTRIC WELDING POSITIONERS
- PCS. 001 - MOBILE SITE WORKSHOP OF MQ. 270
- MULTIDIRECTIONAL SCAFFOLDING 30.000 CM



QUALIFICATION | CLIENTS AND VENDOR LIST



PERFORMED PROJECTS

2024

- **NESTE ROTTERDAM/TECHNIP - NEW PLANT**
- **RAM RAFFINERIA DI MILAZZO - GENERAL MAINTENANCE 2024**
- **GOI ENERGY - MAINTENANCE OF LOT 4**
- **GOI ENERGY - TORCH TRIPTYCH REPLACEMENT**
- **API RAFFINERIA DI ANCONA - GENERAL TURN AROUND 2024**
- **AIR LIQUID - GENERAL TURN AROUND 2024**
- **ORLEN LIETUVA - PREFABRICATION OF OVEN PIPING**
- **SONATRACH - GENERAL MAINTENANCE 2025**
- **ZOETIS - COLUMN CONSTRUCTION AND REPLACEMENT**

2023

- **ERG POWER - CONSTRUCTION AND REPLACEMENT OF NEW TANK**
- **API RAFF. DI ANCONA - GENERAL TURN AROUND 2023 COLUMNS AND VESSELS**
- **RAM RAFFINERIA DI MILAZZO - GENERAL TURN AROUND 2023**
- **ENEL CATANIA - MECHANICAL ASSEMBLY**
- **AIR LIQUID - GENERAL TURN AROUND**
- **ST MICROELECTRONICS - MECHANICAL ASSEMBLY OF NEW PLANT**
- **ENI RAFFINERIA DI GELA - PREFABRICATION OF NEW SKIDS**
- **SASOL - INTERCONNECTING NEW SOLAR SYSTEM**
- **GOI ENERGY - FIVE YEAR MAINTENANCE CONTRACT**

2022

- **API RAFFINERIA DI ANCONA - GENERAL TURN AROUND 2022 COLUMNS AND VESSELS**
- **ENI VAL D'AGRI - NEW PLANT**
- **ENEL PIACENZA - MECHANICAL CONSTRUCTION AND ASSEMBLY**
- **RAM MILAZZO - MAINTENANCE OF HYDROGEN AND HDC, TOPPING AND MEROX SYSTEMS**



PERFORMED PROJECTS

2021

- **API RAFF. DI ANCONA** - GENERAL TURN AROUND – COLUMN AND VESSEL
- **BONATTI S.P.A.** - GENERAL TURN AROUND – ENI VIGGIANO
- **TP ENGINEERING** - PIPES PREFABRICATION AND ASSEMBLY – PETROTEL/LUKOIL PLOIESTI

2020

- **API RAFF. DI ANCONA** - GENERAL TURN AROUND – COLUMN AND VESSEL
- **LUKOIL/ISAB** - GENERAL MAINTENANCE TURN AROUND LOT 2 AND LOT 5
- **LUKOIL/ISAB** - ISAB INTERCONNECTING FROM CLAUS 1-2-3-4 AND MAXISULF

2019

- **API RAFF. DI ANCONA** - GENERAL TURN AROUND
- **SARAS RAFFINERIA DI SARROCH** - SUBSTITUTION PIPING DURING TURN AROUND
- **RAM RAFF. DI MILAZZO** - GENERAL TURN AROUND
- **VERSALIS S.P.A.** - GENERAL TURN AROUND
- **LUKOIL/ISAB** - SUBSTITUTION OF OIL PIPELINES 18-28 E 31
- **LUKOIL/ISAB** - MAINTENANCE FLARE STACK B 681

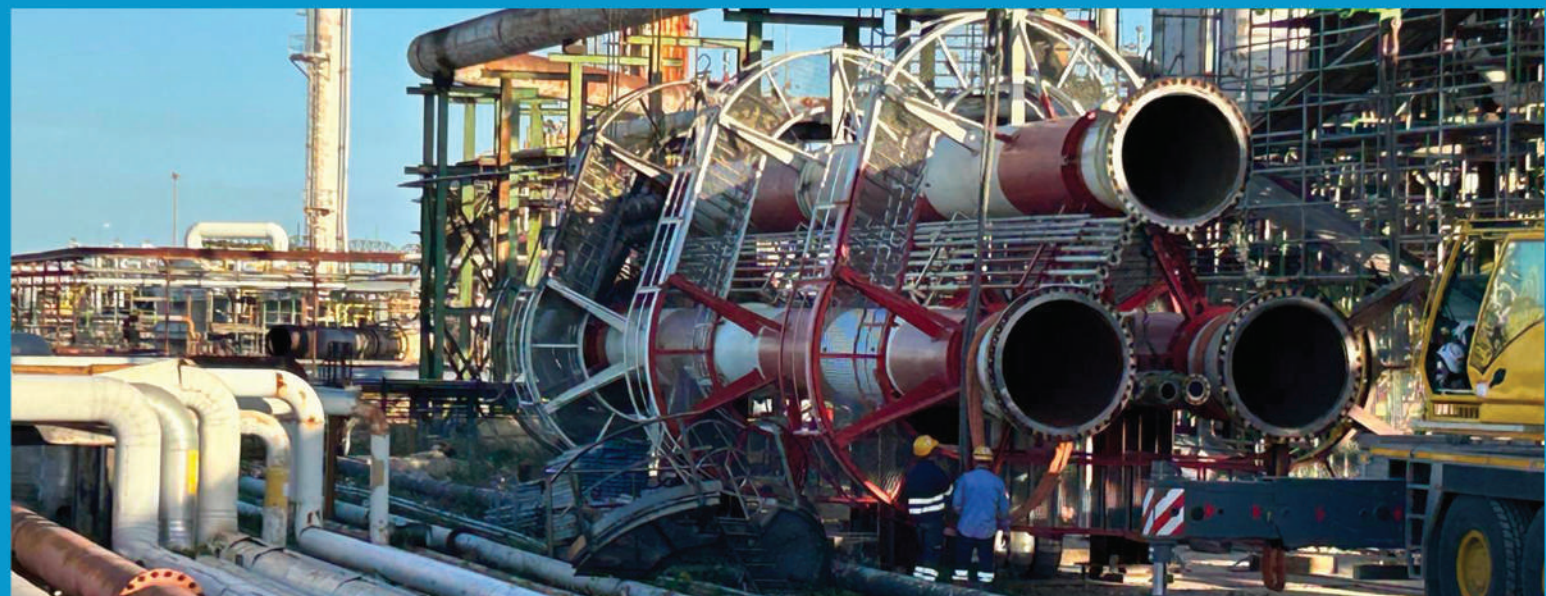
2018

- **API RAFF. DI ANCONA** - GENERAL TURN AROUND
- **KRAFTANLAGEN** - REVAMPING FURNACE PETROM
- **RAM RAFF. DI MILAZZO** - GENERAL TURN AROUND
- **XERVON GMBH** - GENERAL TURN AROUND FACTORY LYONDELLBASELL - WESSELING



PREVIOUS SIGNIFICANT EXPERIENCES

- **XERVON GMBH** - GENERAL TURN AROUND BP LINGEN REFINERY - EXCHANGERS
- **VELTEC GMBH** - GENERAL TURN AROUND BP LINGEN REFINERY - COLUMNS
- **LUKOIL/ISAB** - GENERAL TURN AROUND
- **RAM RAFF. DI MILAZZO** - GENERAL TURN AROUND
- **TOTAL/TECNIMONT** - ASSEMBLY OF NEW TEMPA ROSSA OIL CENTRE
- **SASOL S.P.A.** - ASSEMBLY OF NEW CHPP PLANT
- **LUKOIL/ISAB** - RENOVATION OF THE FIRE PREVENTION NETWORK 6TH STEP
- **API RAFF. DI ANCONA** - GENERAL TURN AROUND 2014
- **LUKOIL/TECHNIP ITALY** - PIPING AND STEAM TRACING LUKOIL BOURGAS
- **ALSTOM POWER** - ADAPTATION OF B6 BOILER C/O ENIPOWER MANTOVA
- **ENI/VERSALIS** - REPLACEMENT OF THE 4TH LINE QUENCH TOWER
- **THYSSENKRUPP XERVON** - GENERAL TURN AROUND BAYERNOIL NEUSTAD AN DER DONAU
- **THYSSENKRUPP XERVON** - GENERAL TURN AROUND GOTEBOG PREEMRAFF





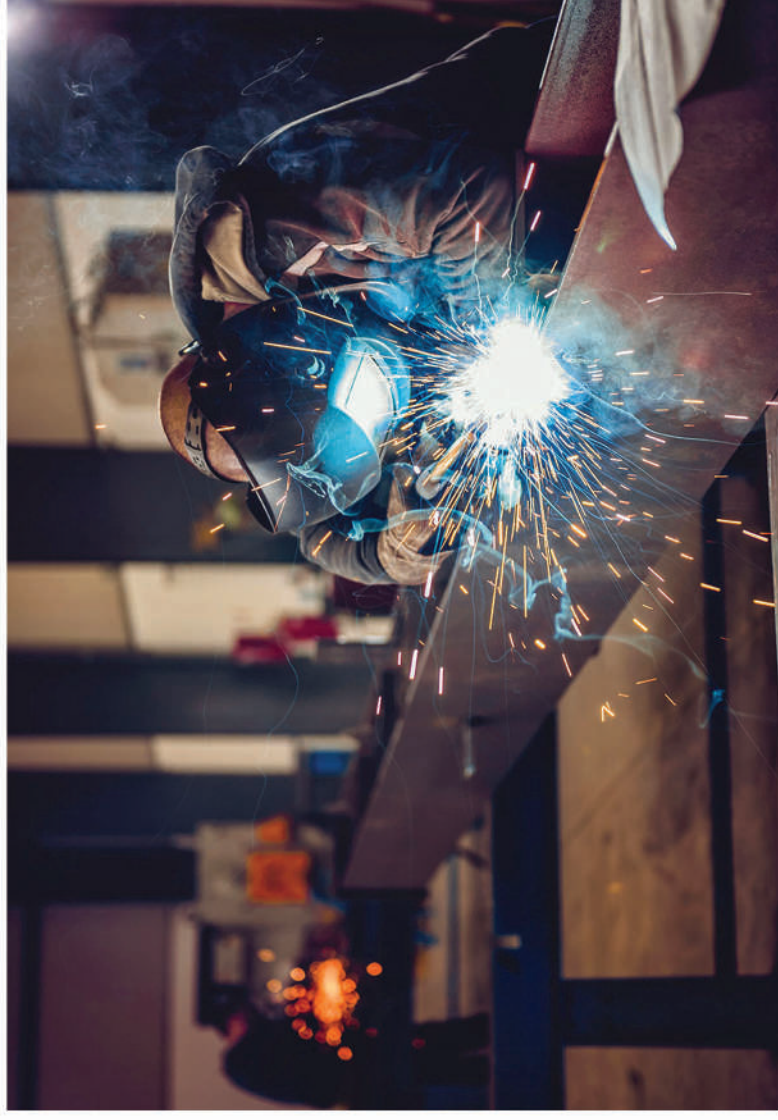
WELDING QUALIFICATIONS



#	ENTE CERT.	WPAR N°	WPS N°	QUALIFICATO IN ACCORDO A	PROC. DI SALDATURA	GR. MATER.	MAT1	MAT2	Ø	Sp.	POS
1	TUV	0230-GTAW-01P/09	GTAW-01P/09	ASME IX BPV CODE	141	PN1 GR1	ASTM A 106 Gr.B	ASTM A 106 Gr.B	60,3	5,54	5G
2	TUV	P285-09-020	141-01P/09	UNI EN ISO 15614-1:2008	141	1.1	ASTM A 106 Gr.B	ASTM A 106 Gr.B	60,3	5,54	PG_J-L045
3	IIS	GB0677/07	MMP 04/07	UNI EN ISO 15614-1:2005	141	1.1	ASTM A 106 Gr.B	ASTM A 106 Gr.B	21,3	2,77	PG_J-L045
4	IIS	GB0676/07	MMP 03/07	UNI EN ISO 15614-1:2005	141 + 111	1.1	ASTM A 106 Gr.B	ASTM A 106 Gr.B	60,3	11,13	PG_J-L045
5	IIS	SB0075/05	MMP 03P/05	UNI EN ISO 15614-1:2005	141 + 136	1.1	ASTM A 106 Gr.B	ASTM A 106 Gr.B	168,3	10,97	PA
6	IIS	SB0037/05	MMP 01P/05	UNI EN ISO 15614-1:2005	141 + 111	1.1	ASTM A 106 Gr.B	ASTM A 106 Gr.B	168,3	14,27	PF
7	IIS	SB0038/05	MMP 02P/05	UNI EN ISO 15614-1:2005	141 + 111	1.1	ASTM A 106 Gr.B	ASTM A 106 Gr.B	60,3	5,54	PF
8	IIS	SB0078/10	MMP 01	UNI EN ISO 15614-1:2008	141 + 111	1.1	ASTM A 106 Gr.B	ASTM A 106 Gr.B	219,1	35,2	PC_PF
9	IIS	SB0079/10	MMP 02	UNI EN ISO 15614-1:2008	141 + 136	1.1	ASTM A 106 Gr.B	ASTM A 106 Gr.B	219,1	35,2	PC_PF
10	IIS	SB0047/10	MMP-03-10	UNI EN ISO 15614-1:2008	141 + 111	8.1	ASTM A312 TP304L	ASTM A312 TP304L	60,3	8,74	PG_J-L045
11	IIS	SB0021/09	MMP 01/09	UNI EN ISO 15614-1:2008	141 + 111	8.1	ASTM A312 TP316L	ASTM A312 TP316L	60,3	8,74	PG_J-L045
12	IIS	SD0001/09	MMP 01/09	ASME CODE BTV:2007	141 + 111	PN8 GR1	ASTM A312 TP316L	ASTM A312 TP316L	60,3	8,74	5G
13	IIS	GB0675/07	MMP 02/07	UNI EN ISO 15614-1:2005	141 + 111	1.1	ASTM A333 Gr.6	ASTM A333 Gr.6	60,3	11,07	PG_J-L045
14	IIS	GB0674/07	MMP 01/07	UNI EN ISO 15614-1:2005	141 + 136	1.1	ASTM A333 Gr.6	ASTM A333 Gr.6	114,3	11,13	PG_J-L045
15	IIS	GB0678/07	MMP 05/07	UNI EN ISO 15614-1:2005	141 + 111	5.1	ASTM A335 P11	ASTM A335 P11	60,3	11,07	PG_J-L045
16	IIS	SB0052/10	MMP-02-10	UNI EN ISO 15614-1:2008	141 + 111	5.2	ASTM A335 P22	ASTM A335 P22	60,3	11,07	PG_J-L045
17	IIS	SB0041/10	MMP-01-10	UNI EN ISO 15614-1:2008	141 + 111	5.3	ASTM A335 P5	ASTM A335 P5	60,3	11,07	PG_J-L045
18	IIS	SB0091/10	MMP 04/10	UNI EN ISO 15614-1:2008	141 + 111	6.4	ASTM A335 P91	ASTM A335 P91	60,3	9,2	PC_PF
19	IIS	SB0096/10	MMP 03/10	UNI EN ISO 15614-1:2008	141 + 111	6.4	ASTM A335 P91	ASTM A335 P91	168,3	14,27	PC_PF
20	TUV	0252-06AS/08	06AS/08	ASME IX BPV CODE	136	1.1	EN10025 S275JR	EN10025 S275JR	NA	25	3G
21	TUV	0252-06AW/08	06AW/08	AWS D1.1:2006 CODE	136	1.1	EN10025 S275JR	EN10025 S275JR	NA	25	3G
22	TUV	P285-08-062	06N/08	UNI EN ISO 15614-1:2005	136	1.1	EN10025 S275JR	EN10025 S275JR	NA	25	PA_PC
23	TUV	P285-07-007	MMP 01P/07	UNI EN ISO 15614-1:2005	135	1.2	EN10028-3 P355 NH	EN10028-3 P355 NH	NA	30	PA
24	TUV	P285-11-048	DX02/11	UNI EN ISO 15614-1:2008	141	10,2	ASTM A 790 UNS S32750	ASTM A 790 UNS S32750	48,3	5,08	PF / PC
25	B.V.	BAR-11-B-012	11/01 REV.1	UNI EN ISO 15614-1:2008	141 + 111	5.2	ASTM A 335 P22	ASTM A 335 P22	168,3	21,95	PC_PF
26	B.V.	BAR-11-B-013	11/02 REV.1	UNI EN ISO 15614-1:2008	141 + 136	5.2	ASTM A 335 P22	ASTM A 335 P22	168,3	21,95	PC_PF
27	B.V.	BAR-11-B-017	13-11	UNI EN ISO 15614-7:2008	111	1.1	INCONEL 112	INCONEL 112	PLATE	25	PC
28	B.V.	BAR-12-B-013	002/12	UNI EN ISO 15614-1:2012	141	1.1 - 8.1	ASME SA106	ASME SA312	33,4	4,5	PC_PH
29	TUV	P285-11-080	1.1-01P/11	UNI EN ISO 15614-1:2008	141 + 136	1.1	ASTM A 106 Gr.B	ASTM A 106 Gr.B	114,3	8,56	PF

#	ENTE CERT.	WPAR N°	WPS N°	QUALIFICATO IN ACCORDO A	PROCESSO DI SALDATURA	GRUPPO MATERIALE	MAT1	MAT2	Ø	Sp.	POS
31	B.V.	ROM-13-B-001	003-12-REV.1	UNI EN ISO 15614-1:2012	141+111	10.02	ASTM A 790 UNS S32750	ASTM A 790 UNS S32750	114,3	6,02	PC_PH
32	B.V.	ITA-13B-140	BVI-01-13	UNI EN ISO 15614-1:2012	111	1.4	S355J0WP	S355J0WP	PLATE	8	PC_PF
33	B.V.	ITA-13B-141	BVI-02-13	UNI EN ISO 15614-1:2012	111	1.1	16Mo3	16Mo3	PLATE	8	PC_PF
34	RINA	14PA00033PO1/A	RS-01-14	UNI EN ISO 15614-1:2012 UNI EN ISO 13445-4 Raccolta s ed. 95	121	1.1	ASTM A 516 Gr.60	ASTM A 516 Gr.60	PLATE	30	PC_PB
35	RINA	14PA00033PO2/A	RS-02-14	UNI EN ISO 15614-1:2012 UNI EN ISO 13445-4 Raccolta s ed. 95	111	1.1 to 1.8	S275JR	ASTM A 312 TP321	PLATE TO 60,3	18 TO 5,54	PH
36	RINA	14PA00033PO3/A	RS-03-14	UNI EN ISO 15614-1:2012 UNI EN ISO 13445-4 Raccolta s ed. 95	111	1.1 to 1.8	S275JR	X2 CrNi 18-9	PLATE	15	PC_PF
37	B.V.	ITA-B-15/6005	P21-1/15	UNI EN ISO 15614-1:2012	141	1.1	ASTM A 106 Gr. B	ASTM A 106 Gr. B	21,3	2,77	PA
38	B.V.	ITA-B-15/6006	BP01/15	UNI EN ISO 15614-1:2012	141	1.1	ASTM A 106 Gr.B	ASTM A 106 Gr. B	1,3 TO 60,3	2,77 TO 5,54	PB
39	RINA	15PA00188P01/A	01/15	UNI EN ISO 15614-1:2012	111	1.1	S275J2	S275J2	PLATE	12	PC_PF
40	RINA	15PA00188P02/A	02/15	UNI EN ISO 15614-1:2012	111	1.1	S275J2	S275J2	PLATE	30	PB
41	B.V.	QP-ITA-17-01085	BC-01/17	UNI EN ISO 15614-1	141+111	11.1	ASTM A 106 Gr.B	ASTM A 106 Gr.B	48,3 TO 168,3	5,08 TO 7,11	TUTTE ESCLUDE PC O PJ
42	B.V.	QP-ITA-17-01086	BC-02/17	UNI EN ISO 15614-1	141+136	11.1	ASTM A 106 Gr.B	ASTM A 106 Gr.B	48,3 TO 168,3	5,08 TO 7,11	TUTTE ESCLUDE PC O PJ
43	B.V.	QP-ITA-B-17-184	316L-02W/17	UNI EN ISO 15614-1:2012	141+111	8.1	ASTM A 312 TP 316L	ASTM A 312 TP 316L	219,1	6,35 TO 25,4	PC_PH
44	B.V.	QP-ITA-B-17-183	316L-01W/17	UNI EN ISO 15614-1:2012	141+136	8.1	ASTM A 312 TP 316L	ASTM A 312 TP 316L	219,1	6,35 TO 25,4	PC_PH
45	B.V.	QP-ITA-B-17-307	316L-03W/17	UNI EN ISO 15614-1:2012	141	8.1	ASTM A 312 TP 316L	ASTM A 312 TP 316L	26,7	2,01 TO 5,74	PC_PH
46	RINA	15PA00405P01/A	IN.316L	UNI EN ISO 15614-1:2012	141	8.1	ASTM A 312 TP 316L	ASTM A 312 TP 316L	48,3	3,88	PH_PC
47	RINA	15PA00505P01/A	P11	UNI EN ISO 15614-1:2012	141+136	5.1	ASTM A 335 P11	ASTM A 335 P11	168,3	14,27	PA
48	I I S	SB0061/19	304 141	UNI EN ISO 15614-1:2019	141	8.1	ASTM A312 TP304L	ASTM A312 TP304L	33,4	4,95	PC_PH
49	I I S	SB0062/19	333 Gr. 6 141	UNI EN ISO 15614-1:2019	141	11.1	ASTM A333 Gr.6	ASTM A333 Gr.6	33,4	6,35	PC_PH
50	I I S	SB0063/19	347 141	UNI EN ISO 15614-1:2019	141	8.1	ASTM A312 TP347L	ASTM A312 TP347L	33,4	4,95	PC_PH
51	I I S	SB0064/19	P11 141	UNI EN ISO 15614-1:2019	141	5.1	ASTM A335 P11	ASTM A335 P11	33,4	6,35	PC_PH
52	I I S	SB0031/19 REV.1	01/19 IMB.	UNI EN ISO 15614-1:2017	141+111	5.2-8.1	ASTM A335 P22	ASTM A312 TP304L	80	15,24	PC_PH
53	I I S	SB0018/16	T-BRANCH 45°	UNI EN ISO 15614-1:2012	141+136	1.1	ASTM A 106 Gr.B	ASTM A 106 Gr.B	60,3 TO 168,3	11,07 TO 7,11	TUTTE ESCLUDE PC O PJ
54	I I S	SB0019/16	03/07 TT2	WPQR GB676/07	141 + 111	1.1	ASTM A 106 Gr.B	ASTM A 106 Gr.B	60,3	11,13	PG_J-L045
55	I I S	SB0020/16	03/07 TT2	WPQR P285-11-080	141 + 136	1.1	ASTM A 106 Gr.B	ASTM A 106 Gr.B	114,3	8,56	PF
56	I I S	SB0043/20	MMP 008	UNI EN ISO 15614-1:2019	141 + 136	8.1	ASTM A312 TP304L	ASTM A312 TP304L	141	7,11	PC_PH

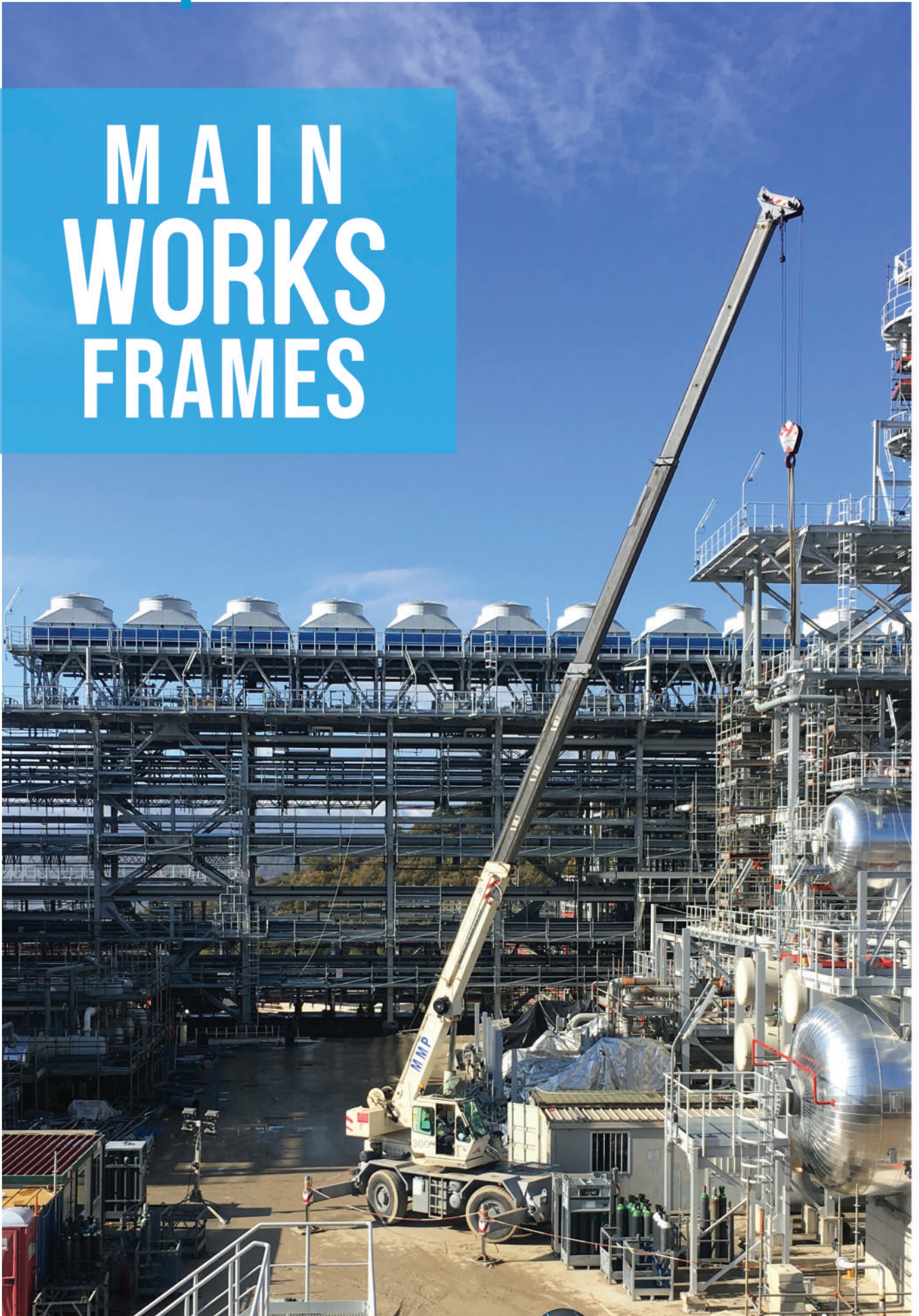
57	I I S	SB0044/20	MMP 005	UNI EN ISO 15614-1:2019	111	11.1	ASTM A 106 Gr.B	ASTM A 106 Gr.B	26,7	7,82	PC_PH
58	I I S	SB0003/21	MMP 004	EN ISO 15614-7:2020	111	1.2	S355J2+N	E NI 4060 (NICu30Mn3Ti)	PLATE	12	PC
59	I I S	SB0004/21	MMP 003	EN ISO 15614-1:2017 / E.C.1:2018 / AMD.1:2019	141	42	ASTM B 165 N04400	ASTM B 165 N04400	88,9	7,62	PH/PC
60	I I S	SB0005/21	MMP 005	UNI EN ISO 15614-1:2019	141 + 111	7.2	ASTM A240 TP410S	ASTM A240 TP410S	60,3	7,05	PH/PC
61	I I S	SB0006/21	MMP 006	UNI EN ISO 15614-1:2019	141 + 111	8.1-7.2	ASTM A240 TP321	ASTM A240 TP410S	60,3	7,05	PH/PC



2020 - 2024

MAIN WORKS CARRIED OUT

MAIN WORKS FRAMES



2020 - 2024

MAIN WORKS CARRIED OUT



2020 - 2024

MAIN WORKS CARRIED OUT



2020 - 2024

MAIN WORKS CARRIED OUT



2020 - 2024

MAIN WORKS CARRIED OUT



2020 - 2024

MAIN WORKS CARRIED OUT





“You never fulfill till you set new GOALS and these are the ones that allow you to always overcome yourself.”

Salvatore Nicolosi



tel +39 0931 735749

info@mmpgroup.it

www.mmpgroup.it

Priolo Gargallo